

MONTHLY MEMBERSHIP PROGRESS REPORT

LOCATION TEXAS

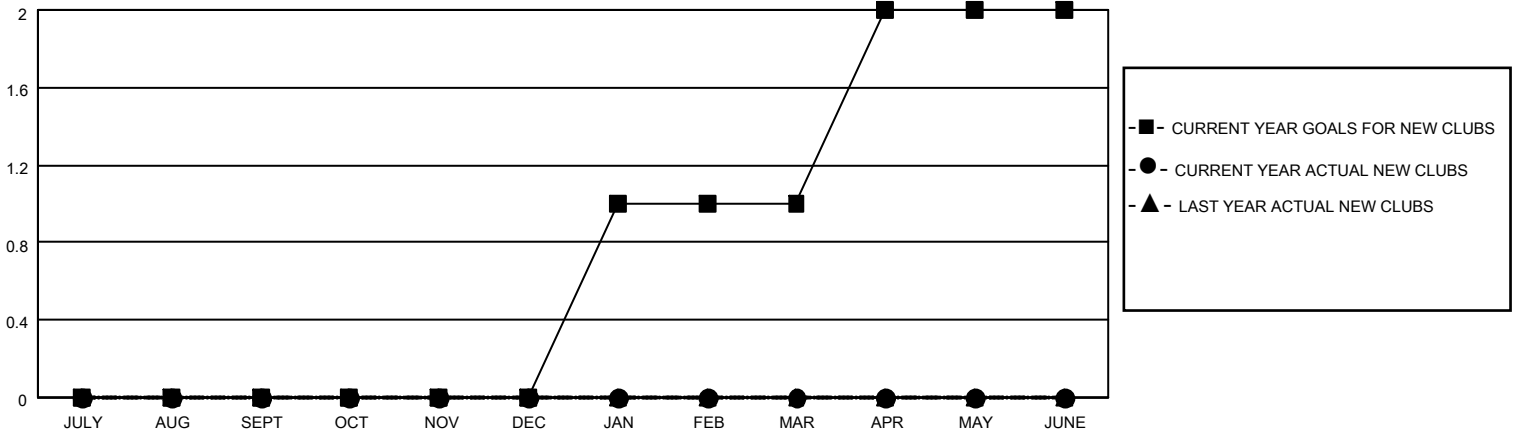
District 2 A2

Results as of: 5/31/2023

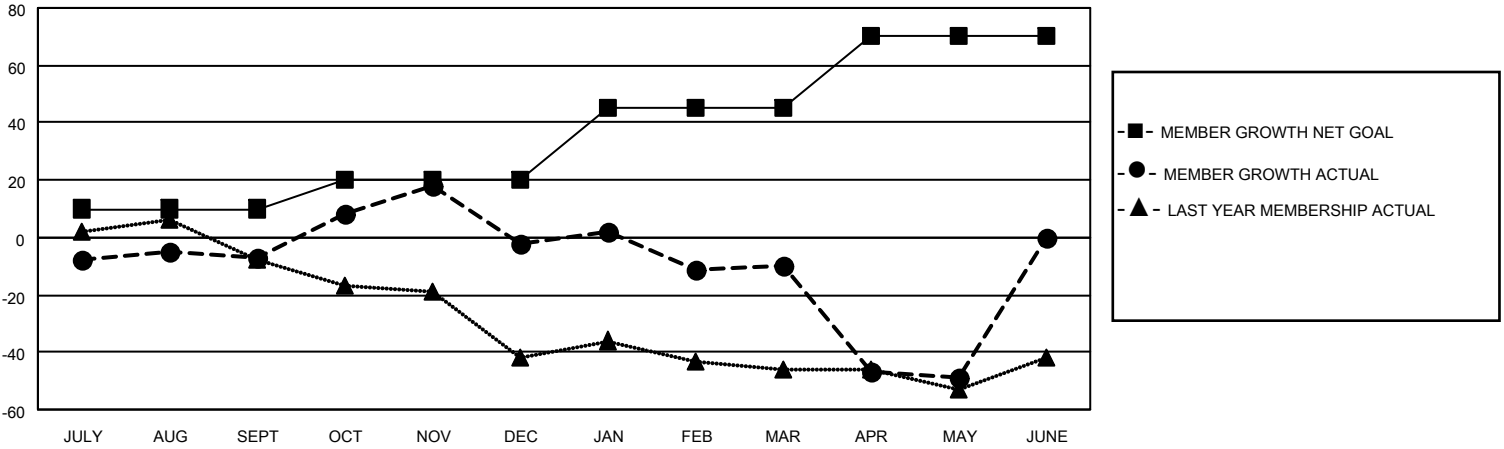
Clubs			
RESULTS FOR 2022-2023			
QUARTER	NEW CLUB GOAL	NEW CLUBS	DROPPED CLUBS
JULY/AUG/SEPT	0	0	3
OCT/NOV/DEC	0	0	0
JAN/FEB/MAR	1	0	0
APR/MAY/JUNE	1	0	0

Members			
RESULTS FOR 2022-2023			
QUARTER	MEMBER GROWTH NET GOAL	MEMBER GROWTH ACTUAL	DROPPED MEMBERS ACTUAL (including transfers)
JULY/AUG/SEPT	10	41	45
OCT/NOV/DEC	10	49	42
JAN/FEB/MAR	25	39	43
APR/MAY/JUNE	25	16	53

GOALS AND ACTUAL NEW CLUBS CUMULATIVE



GOALS AND ACTUAL MEMBERS CUMULATIVE



DROPPED CLUBS: 3

34 CLUBS OF 61 ADDED 1 OR MORE NEW MEMBERS

GENDER DISTRIBUTION

MALE	852 (59.62%)
FEMALE	575 (40.24%)
NON BINARY	0 (0.00%)
PREFER NOT TO ANSWER	2 (0.14%)

DROPPED MEMBERS

DECEASED	22
CLUB CANCELLED	0
OTHER	161
TOTAL	183

[CLICK HERE FOR CUMULATIVE MEMBERSHIP DATA](#)

TOTAL FAMILY UNIT MEMBERS	268
FAMILY MEMBERS PAYING HALF DUES	136